

?

? 561-996-6571 | [About](#) | [Contact](#) | [Provider Login](#)

 [Change Current Site](#) ▾

[Home](#) / [For Patients](#) / [Hospital](#) / [About Us](#) / [Leadership](#)

Leadership

[TOP](#)

Director of Nursing

Janet Moreland has more than 30 years of experience in hospital, home health, skilled nursing, community and public health primary care environments and has served as clinical faculty.



As Director of Nursing, Mrs. Moreland is responsible for the leadership and direction of nursing, case management, nurse navigation, and clinical education and informatics at the hospital.

In her prior role as Director of Quality and Patient Safety, Mrs. Moreland oversaw efforts to improve the safety, effectiveness and efficiency of the medical services Lakeside Medical Center provides to its patients.

Prior to joining Lakeside Medical Center in August 2013, Mrs. Moreland served with the Florida Department of Health Palm Beach County for more than 25 years, most recently as Health Center Administrator for the C. L. Brumback Health Center in Belle Glade. As Administrator, she was responsible for the daily operations of the health center. Other positions she held during her tenure with the Health Department include senior community health nurse, community health nursing supervisor, senior community health nursing supervisor and ARNP coordinator.

[TOP](#)

Mrs. Moreland received her Master of Science in Nursing Education and Master of Science in Nursing at Florida Atlantic University in

Medical Executive Committee

The Medical Executive Committee of Lakeside Medical Center has primary governance over the Medical Staff and serves a liaison between the Medical Staff, Hospital Administration and the Governing Board.

Responsibilities

- Act on behalf of the Lakeside Medical Center Medical Staff
- Adopt, amend and implement policies, Bylaws, Rules & Regulations of the Medical Staff
- Make recommendations to Governing Board relating to
 - Structure
 - Medical Staff Appointments and Reappointments
 - Quality improvement processes and activities
- Review of quality indicators
- Provide leadership regarding patient safety
- Oversee and improve patient satisfaction
- Promote continuing medical education

Structure

- The Medical Executive Committee is comprised of elected active medical staff members, which include Department Chiefs and Service Chiefs
- Terms are two years and are based on a calendar year.





Daniel Padron, DO, CPE
Chief Medical Officer



David Bohorquez, DO
Chief of Staff



Roman Skylar, MD

TOP

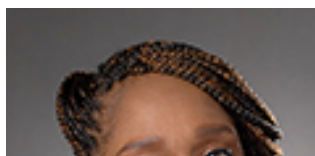
Chief of Staff Elect



Melissa Carlson, MD
Secretary / Treasurer



Yolanda Cosme, MD
Service Chief of Pediatrics



TOP



Sherida Williams, MD
Service Chief of OB/GYN

Jhawed Khayoumi, MD
Secretary / Treasurer

Jhawed Khayoumi, MD
Secretary / Treasurer



Contact Us



Map & Directions



About Us

Contact Us

Notice of Privacy Practices (PDF)

Privacy Policy & Disclaimer

FEMA DR-4337-FL Public Notice (PDF)

Non-discrimination Notice

ADA Notice

Department of Transportation Notice

Employee Access Center

Public Meetings

see all meetings

C. L. Brumback Primary Care Clinics Finance Committee

Date: June 26, 2019

Location:

Health Care District of Palm Beach County

1515 N. Flagler Drive, Suite 101

West Palm Beach, FL 33401

Social Media

?

?

?

?

?

[Sitemap](#) | © Health Care District of Palm Beach County

[TOP](#)